

R.E. Webster

R.E. Webster

# Songs by J. C. Bartlett

<b>A Dream</b> . . . . .	.50
High Voice, in A $\flat$ ; Med. Voice, in F; Med Voice, in E; Low Voice, in D $\flat$ .	
do. Transcribed for Piano by Heinrich Kiehl . . . . .	.50
<b>Come to Me, Sweetheart</b> . . . . .	.50
High Voice, in F; Medium Voice, in D; Low Voice, in C.	
<b>Memories (Ballad with Waltz Refrain)</b> . . . . .	.50
High or Medium Voice, in B $\flat$ .	
<b>I Love You, Sweet</b> . . . . .	.60
High Voice, in A $\flat$ ; Medium Voice, in F.	
<b>O, Hush-a-by, Baby (with Violin Obligato)</b> . . . . .	.50
Low Voice, in E $\flat$ .	
<b>Rest Thee, My Little One (Lullaby)</b> . . . . .	.50
High Voice, in A $\flat$ ; Low Voice, in F.	
<b>Rosemary (Ballad)</b> . . . . .	.50
High Voice, in G; Low Voice, in E $\flat$ .	
<b>Winona</b> . . . . .	.50
High Voice, in E $\flat$ ; Medium Voice, in C.	
<b>With Fingers Weary and Worn</b> . . . . .	.50
Low Voice, in A.	

## SACRED

<b>A Prayer for Faith (with Violin Obligato)</b> . . . . .	.60
High Voice, in D $\flat$ ; Medium Voice, in B $\flat$ ; Low Voice, in G.	
<b>Come Jesus, Redeemer (adapted to the melody of "A Dream")</b> .50	
High Voice, in G; Low Voice, in D.	
<b>Faith</b> . . . . .	.50
High Voice, in E $\flat$ .	
<b>Grass and Roses (with Violin Obligato.) (Flower Sunday)</b> .50	
High Voice, in A; Low Voice, in E.	
<b>The Day is Ended (with Violin Obligato)</b> . . . . .	.50
High Voice, in G; Low voice, in E $\flat$ .	

BOSTON  
OLIVER DITSON COMPANY

New York  
C. H. DITSON & CO.

Chicago  
LYON & HEALY.

Philadelphia  
J. E. DITSON & CO.

# DEAR, DID YOU KNOW?

Low Voice—F



(Original Key, F)

THE WRAITISLOW

EUGENE COWLES

Moderato

VOICE

PIANO

Dear, did you

know— how sweet to me Was ev - ry glance of

yours— how sweet — The laugh that lights— your face with

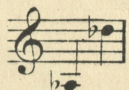
Copyright 1927 by Oliver Ditson Company  
International Copyright Secured

Price, 50 cts.

# A DREAM

Words by  
CHAS. B. CORY

CONT. or BAR. in D $\flat$



Music by  
J. C. BARTLETT

Molto moderato *With expression*

Last night I was  
 dream-ing of thee, love, was dream-ing, I dream'd thou didst  
 prom-ise we ne- - ver should part. While thy lov'd voice ad-

Copyright MDCCCXCV by Oliver Ditson Company.  
Copyright secured in England.

Orchestra parts, complete, may be obtained of the publishers, price 50¢

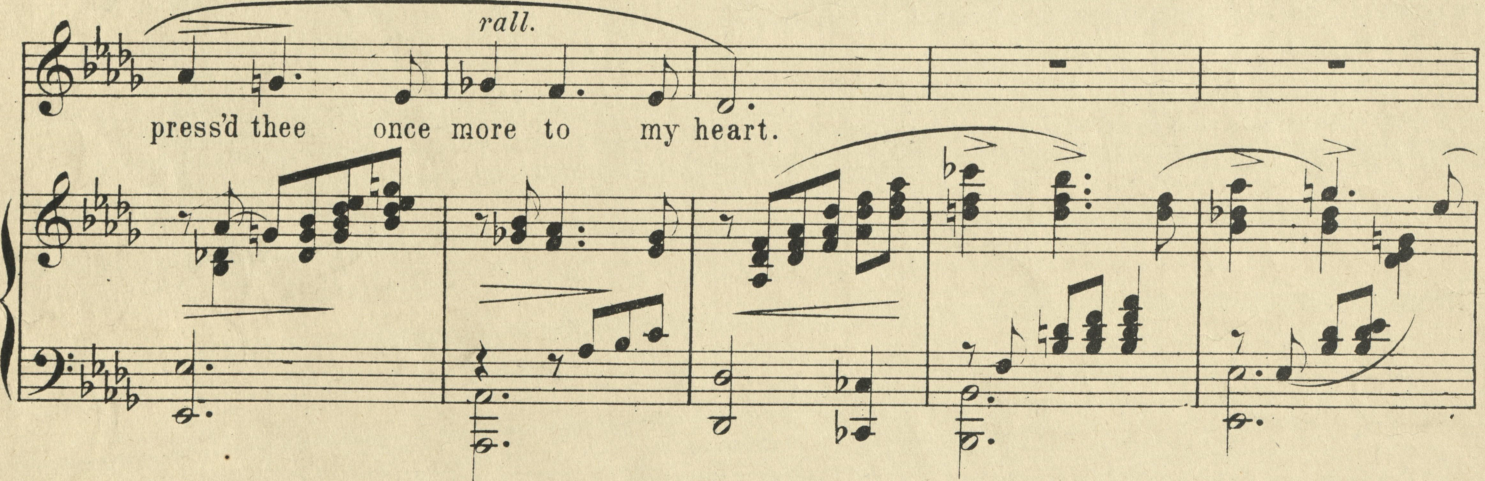
*ff with fervor.*  
dress'd me — and soft hands ca-ress'd me — I kiss'd thee, and



press'd thee once more to my heart, — I kiss'd thee, and



*rall.*  
press'd thee once more to my heart.



I dream'd thou wert liv-ing, my dar-ling, my



dar - ling. I dream'd that I held thee once more to my

breast, While thy soft per - fum'd tress - es, and gen - tle ca -

ress - es Thrill'd me, and still'd me, and lull'd me to

*ff* *molto rit.* *pp*

rest, Thrill'd me, and still'd me, and lull'd me to rest.

*f* *p* *rall.* *pp*

To Have <sup>to</sup> sold to love

Ernest R. Ball Key C.

M. Westmark.

## SONGS BY AMERICAN COMPOSERS

Alden, John Carver	Upon a Meadow All Alone. ( <i>The Violet</i> ) . . . . .	High voice in C	.40
do	When I Wander in the Evening. ( <i>Serenade</i> ) . . . . .	Medium voice in E	.30
Ambrose, Paul	In the Thornbush. ( <i>In dem Dorn-busch</i> ) Op. 12, No. 2. . . . .	Medium voice in G	.40
Andrews, Addison F.	O For a Day in Spring. . . . .	High voice in E $\flat$	.40
do	Song of the Heart. . . . .	High voice in F	.40
Bartlett, Homer N.	An Autumn Song. Op. 121. . . . .	Low voice in E $\flat$	.50
do	Sweetheart, Sigh No More. . . . .	Medium voice in C	.40
do	The Wind is Awake. . . . .	High voice in D $\flat$ . Medium voice in B $\flat$	.50
Bartlett, J. C.	A Dream. . . . .	High voice in A $\flat$ . Med. voice in F. Med. voice in E. Low voice in D $\flat$	.50
do	Come to Me, Sweetheart. . . . .	High voice in F. Low voice in D	.50
do	Winona. . . . .	High voice in E $\flat$ . Medium voice in C	.50
Boott, F.	Lethe. . . . .	Medium voice in D	.30
Brackett, Frank H.	Proposal. . . . .	High voice in E. Medium voice in C	.40
Buck, Dudley	In thy Dreams. Op. 67, No. 2. . . . .	High voice in B $\flat$ . Medium voice in G	.50
do	When the Heart is Young. Op. 67, No. 5. High voice in E $\flat$ . Med. voice in C. Low voice in B $\flat$	.50	
Bullard, Frederic Field	Beam From Yonder Star. High voice in B $\flat$ . Medium voice in G. Low voice in E $\flat$	.40	
do	The Indifferent Mariner. . . . .	Bass voice in E $\flat$	.50
Chadwick, Geo. W.	Across the Hills. . . . .	Medium voice in B $\flat$	.50
do	Good Night. . . . .	Medium voice in C. Low voice in A $\flat$	.50
do	So Far Away. . . . .	Low voice in A minor	.50
Chapman, Wm. R.	This Would I Do. . . . .	High voice in G. Medium voice in E $\flat$	.40
Cole, Rosseter G.	Auf Wiedersehen. Op. 12, No. 2. . . . .	Medium voice in E $\flat$	.40
do	Longing. Op. 12, No. 1. . . . .	High voice in G	.40
Dana, C. Henshaw	Among the Lilies. . . . .	High voice in A $\flat$ . Medium voice in F	.50
do	The Lilies, Clustered Fair and Tall. . . . .	High voice in D $\flat$	.40
DeKoven, Reginald	Cradle Song. . . . .	High voice in G. Low voice in E	.50
Dressler, Louis R.	Drink to Me Only with Thine Eyes. . . . .	High voice in F. Medium voice in D	.40
do	Serenade. . . . .	High voice in G. Low voice in D	.40
Dulcken, Ferdinand Q.	I'm Dreaming, Loved Visions are Nigh. . . . .	Low voice in G	.30
Dunkley, Ferdinand	O Moonlight Deep and Tender. . . . .	High voice in C. Medium voice in A	.40
Farwell, Arthur	Silenced are My Songs. . . . .	Medium voice in F	.40
do	Strow Poppy Buds. . . . .	High voice in C. Medium voice in A	.40
Fisher, William Arms	Softly in a Dream. Op. 9, No. 3. . . . .	Medium voice in F. Low voice in E $\flat$	.40
do	Tell Me So. Op. 9, No. 1. . . . .	Medium voice in G. Low voice in F	.50
do	Under the Rose. Op. 8, No. 4. . . . .	High voice in F. Low voice in D	.30
Gilchrist, W. W.	Gone Before. ( <i>Ballad</i> ) . . . . .	High voice in D	.50
do	Where Would I Be. ( <i>A Sea Song</i> ) . . . . .	Low voice in D	.50
Gottschalk, Louis Moreau	O Loving Heart, Trust On. High voice in F. Medium voice in E. Low voice in D	.60	
do	Slumber On, Baby Dear. ( <i>La Ninnarella</i> ) . . . . .	Medium voice in F	.60
Hadley, Henry K.	Love's Calendar. Op. 15, No. 2. . . . .	High voice in G	.40
do	The Garden Old. ( <i>Violin Obligato</i> ) Op. 19, No. 2. . . . .	High voice in F	.50
do	What the Flowers Say. Op. 19, No. 1. . . . .	High voice in F. Medium voice in D	.40
Harris, Victor	Just as it Used to Do. . . . .	High voice in C. Medium voice in A	.50
Hopekirk, Helen	Bonnie wee thing, Cannie wee thing. . . . .	Medium voice in E	.40
do	Highland Baloo. . . . .	High voice in G	.40
do	O Can ye Sew Cushions? . . . . .	Medium voice in G	.40

THE ABOVE IS BUT A PARTIAL LIST OF SONGS BY THE COMPOSERS NAMED.

BOSTON

OLIVER DITSON COMPANY

New York  
C. H. DITSON & CO.

Chicago  
LYON & HEALY.

Philadelphia  
J. E. DITSON & CO.